



ELECTRONIC COPY

LG755513519
Report verification at igi.org



December 16, 2025

IGI Report Number **LG755513519**

Description **LABORATORY GROWN DIAMOND**

Shape and Cutting Style **PRINCESS CUT**

Measurements **6.54 X 6.52 X 4.23 MM**

GRADING RESULTS

Carat Weight **1.74 CARAT**

Color Grade **E**

Clarity Grade **VVS 2**

December 16, 2025
IGI Report Number **LG755513519**
Description **LABORATORY GROWN DIAMOND**
Shape and Cutting Style **PRINCESS CUT**
Measurements **6.54 X 6.52 X 4.23 MM**

GRADING RESULTS

Carat Weight **1.74 CARAT**

Color Grade **E**

Clarity Grade **VVS 2**

ADDITIONAL GRADING INFORMATION

Polish **EXCELLENT**

Symmetry **EXCELLENT**

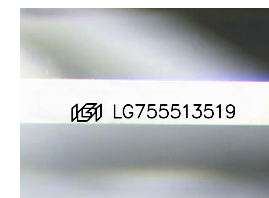
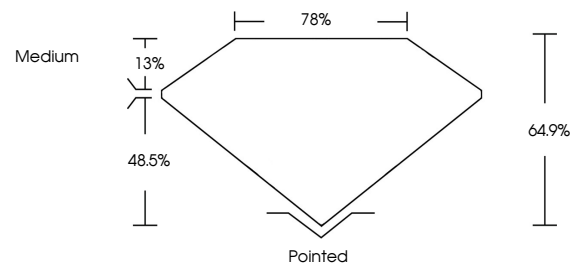
Fluorescence **NONE**

Inscription(s) **LG755513519**

Comments: As Grown - No indication of post-growth treatment.

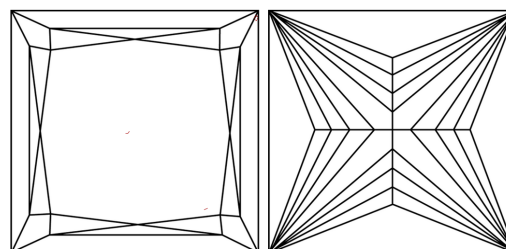
This Laboratory Grown Diamond was created by Chemical Vapor Deposition (CVD) growth process. Type IIa

PROPORTIONS



Sample Image Used

CLARITY CHARACTERISTICS



KEY TO SYMBOLS

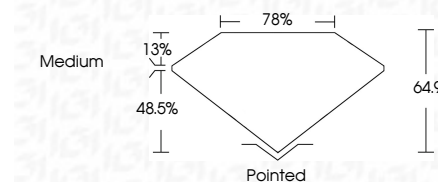
Red symbols indicate internal characteristics.
Green symbols indicate external characteristics.

COLOR

D E F G H I J Faint Very Light Light

CLARITY

FL	IF	VVS ¹⁻²	VS ¹⁻²	SI ¹⁻²	I ¹⁻³
Flawless	Internally Flawless	Very Very Slightly Included	Very Slightly Included	Slightly Included	Included



ADDITIONAL GRADING INFORMATION

Polish **EXCELLENT**

Symmetry **EXCELLENT**

Fluorescence **NONE**

Inscription(s) **LG755513519**

Comments: As Grown - No indication of post-growth treatment.

This Laboratory Grown Diamond was created by Chemical Vapor Deposition (CVD) growth process. Type IIa

On behalf of



IGI

December 16, 2025
IGI Report No LG755513519
PRINCESS CUT
6.54 X 6.52 X 4.23 MM
1.74 CARAT
E
VVS 2
64.9%
78%
Medium
Pointed
EXCELLENT
EXCELLENT
NONE
NONE
IGI LG755513519
Comments: As Grown - No indication of post-growth treatment.
This Laboratory Grown Diamond was created by Chemical Vapor Deposition (CVD) growth process. Type IIa