



ELECTRONIC COPY

LG755513308
Report verification at igi.org



December 5, 2025

IGI Report Number **LG755513308**

Description **LABORATORY GROWN DIAMOND**

Shape and Cutting Style **CUSHION BRILLIANT**

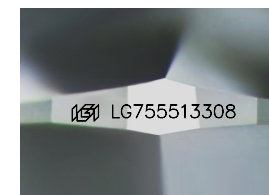
Measurements **10.98 X 8.13 X 4.25 MM**

GRADING RESULTS

Carat Weight **3.02 CARATS**

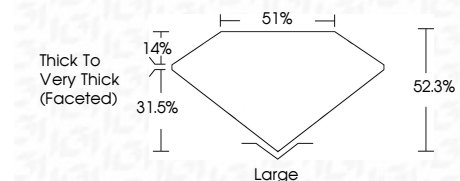
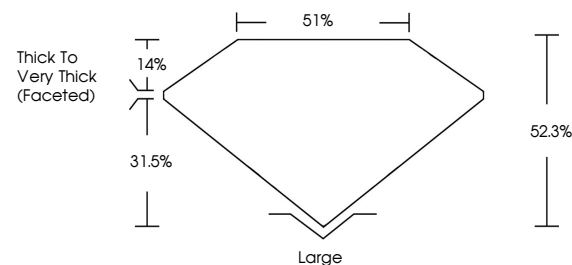
Color Grade **F**

Clarity Grade **VVS 2**

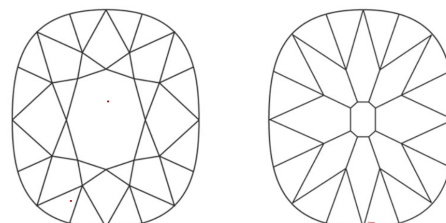


Sample Image Used

PROPORTIONS



CLARITY CHARACTERISTICS



KEY TO SYMBOLS

Red symbols indicate internal characteristics.
Green symbols indicate external characteristics.

COLOR

D E F G H I J Faint Very Light Light

CLARITY

FL	IF	VVS ¹⁻²	VS ¹⁻²	SI ¹⁻²	I ¹⁻³
Flawless	Internally Flawless	Very Very Slightly Included	Very Slightly Included	Slightly Included	Included

ADDITIONAL GRADING INFORMATION

Polish **EXCELLENT**

Symmetry **EXCELLENT**

Fluorescence **NONE**

Inscription(s) **IGI LG755513308**

Comments: This Laboratory Grown Diamond was created by Chemical Vapor Deposition (CVD) growth process.
Type IIa



IGI

December 5, 2025
IGI Report No LG755513308
CUSHION BRILLIANT
10.98 X 8.13 X 4.25 MM
3.02 CARATS
F
VVS 2
62.3%
31.5%
Thick to Very Thick (Faceted)
Large
EXCELLENT
EXCELLENT
NONE
IGI LG755513308
Comments: This Laboratory Grown Diamond was created by Chemical Vapor Deposition (CVD) growth process.
Type IIa