



**ELECTRONIC COPY**

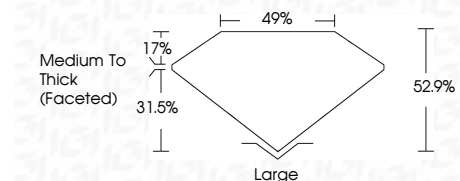
LG755513307  
Report verification at igi.org



December 5, 2025  
IGI Report Number **LG755513307**  
Description **LABORATORY GROWN DIAMOND**  
Shape and Cutting Style **CUSHION BRILLIANT**  
Measurements **13.22 X 9.78 X 5.17 MM**

**GRADING RESULTS**

Carat Weight **5.02 CARATS**  
Color Grade **F**  
Clarity Grade **VS 2**



**ADDITIONAL GRADING INFORMATION**

Polish **EXCELLENT**  
Symmetry **EXCELLENT**  
Fluorescence **NONE**  
Inscription(s) **IGI LG755513307**  
Comments: This Laboratory Grown Diamond was created by Chemical Vapor Deposition (CVD) growth process. Type IIa



December 5, 2025  
IGI Report No LG755513307  
**CUSHION BRILLIANT**  
13.22 X 9.78 X 5.17 MM  
5.02 CARATS  
F  
VS 2  
52.9%  
49%  
Medium To Thick (Faceted)  
Large  
EXCELLENT  
EXCELLENT  
NONE  
IGI LG755513307  
Comments: This Laboratory Grown Diamond was created by Chemical Vapor Deposition (CVD) growth process. Type IIa

December 5, 2025  
IGI Report Number **LG755513307**  
Description **LABORATORY GROWN DIAMOND**  
Shape and Cutting Style **CUSHION BRILLIANT**  
Measurements **13.22 X 9.78 X 5.17 MM**

**GRADING RESULTS**

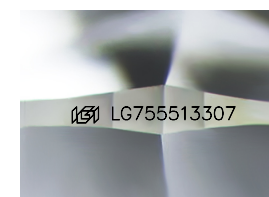
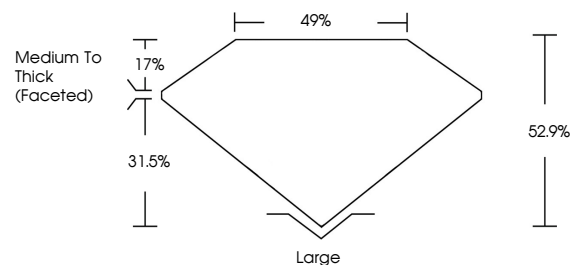
Carat Weight **5.02 CARATS**  
Color Grade **F**  
Clarity Grade **VS 2**

**ADDITIONAL GRADING INFORMATION**

Polish **EXCELLENT**  
Symmetry **EXCELLENT**  
Fluorescence **NONE**  
Inscription(s) **IGI LG755513307**

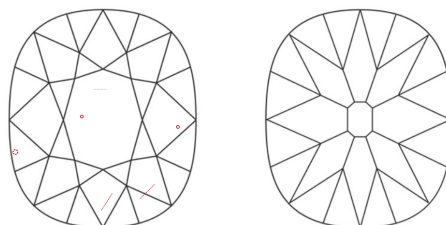
Comments: This Laboratory Grown Diamond was created by Chemical Vapor Deposition (CVD) growth process. Type IIa

**PROPORTIONS**



Sample Image Used

**CLARITY CHARACTERISTICS**



**KEY TO SYMBOLS**

Red symbols indicate internal characteristics.  
Green symbols indicate external characteristics.

**COLOR**

D E F G H I J Faint Very Light Light

**CLARITY**

FL	IF	VS <sup>1-2</sup>	VS <sup>1-2</sup>	SI <sup>1-2</sup>	I <sup>1-3</sup>
Flawless	Internally Flawless	Very Very Slightly Included	Very Slightly Included	Slightly Included	Included

