



ELECTRONIC COPY

LG755513039
Report verification at igi.org



December 7, 2025

IGI Report Number **LG755513039**

Description **LABORATORY GROWN DIAMOND**

Shape and Cutting Style **EMERALD CUT**

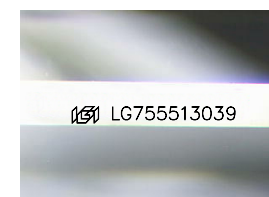
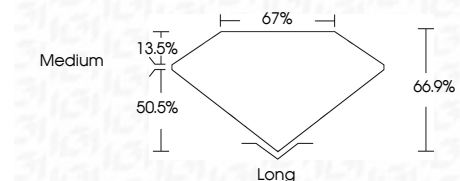
Measurements **12.64 X 9.03 X 6.04 MM**

GRADING RESULTS

Carat Weight **6.69 CARATS**

Color Grade **F**

Clarity Grade **VVS 2**



Sample Image Used

ADDITIONAL GRADING INFORMATION

Polish **EXCELLENT**

Symmetry **EXCELLENT**

Fluorescence **NONE**

Inscription(s) **IGI LG755513039**

Comments: This Laboratory Grown Diamond was created by Chemical Vapor Deposition (CVD) growth process. Type IIa



December 7, 2025	6.69 CARATS	F	VVS 2	66.9%	67%	Medium	Long
IGI Report No LG755513039	EMERALD CUT	12.64 X 9.03 X 6.04 MM	Color Grade	Depth	Table	Girdle	Culet
			Color Grade	Depth	Table	Girdle	Polish
			Clarity Grade	Table	Girdle	Clarity	Symmetry
			Fluorescence	Inscription(s)		Fluorescence	Inscription(s)
			None	IGI LG755513039		None	IGI LG755513039

Comments: This Laboratory Grown Diamond was created by Chemical Vapor Deposition (CVD) growth process. Type IIa

December 7, 2025
IGI Report Number **LG755513039**
Description **LABORATORY GROWN DIAMOND**
Shape and Cutting Style **EMERALD CUT**
Measurements **12.64 X 9.03 X 6.04 MM**

GRADING RESULTS

Carat Weight **6.69 CARATS**

Color Grade **F**

Clarity Grade **VVS 2**

ADDITIONAL GRADING INFORMATION

Polish **EXCELLENT**

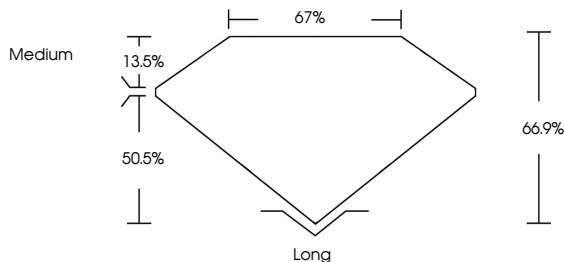
Symmetry **EXCELLENT**

Fluorescence **NONE**

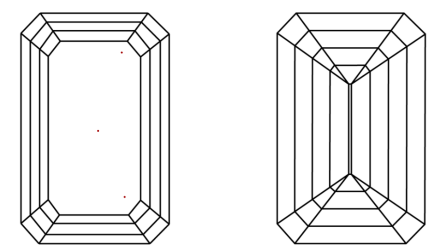
Inscription(s) **IGI LG755513039**

Comments: This Laboratory Grown Diamond was created by Chemical Vapor Deposition (CVD) growth process. Type IIa

PROPORTIONS



CLARITY CHARACTERISTICS



KEY TO SYMBOLS
Red symbols indicate internal characteristics.
Green symbols indicate external characteristics.

COLOR

D	E	F	G	H	I	J	Faint	Very Light	Light
---	---	---	---	---	---	---	-------	------------	-------

CLARITY

FL	IF	VVS ¹⁻²	VS ¹⁻²	SI ¹⁻²	I ¹⁻³
Flawless	Internally Flawless	Very Very Slightly Included	Very Slightly Included	Slightly Included	Included

