



**ELECTRONIC COPY**

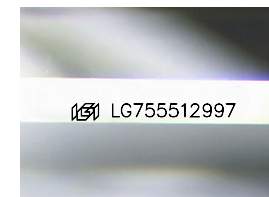
LG755512997  
Report verification at igi.org



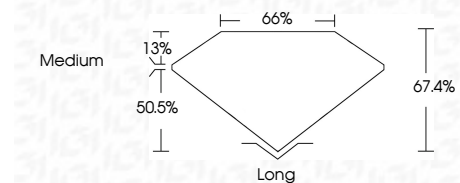
December 8, 2025  
IGI Report Number **LG755512997**  
Description **LABORATORY GROWN DIAMOND**  
Shape and Cutting Style **EMERALD CUT**  
Measurements **9.77 X 6.90 X 4.65 MM**

**GRADING RESULTS**

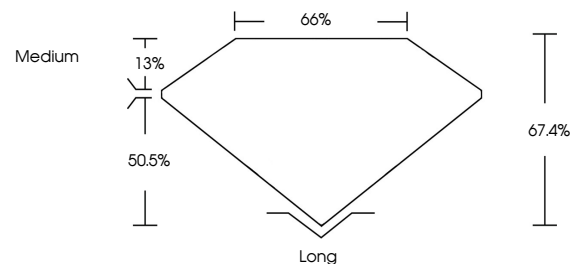
Carat Weight **3.08 CARATS**  
Color Grade **H**  
Clarity Grade **VS 2**



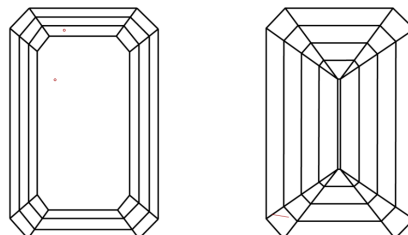
Sample Image Used



**PROPORTIONS**



**CLARITY CHARACTERISTICS**



**KEY TO SYMBOLS**

Red symbols indicate internal characteristics.  
Green symbols indicate external characteristics.

**COLOR**

D E F G H I J Faint Very Light Light

**CLARITY**

FL	IF	VS <sup>1-2</sup>	VS <sup>1-2</sup>	SI <sup>1-2</sup>	I <sup>1-3</sup>
Flawless	Internally Flawless	Very Very Slightly Included	Very Slightly Included	Slightly Included	Included

**ADDITIONAL GRADING INFORMATION**

Polish **EXCELLENT**  
Symmetry **EXCELLENT**  
Fluorescence **NONE**  
Inscription(s) **(IGI) LG755512997**  
Comments: This Laboratory Grown Diamond was created by Chemical Vapor Deposition (CVD) growth process. Type IIa



**IGI**



December 8, 2025  
IGI Report No LG755512997  
**EMERALD CUT**  
3.08 CARATS  
H  
9.77 X 6.90 X 4.65 MM  
Color Grade  
VS 2  
50.5%  
66%  
Medium  
Long  
EXCELLENT  
EXCELLENT  
NONE  
(IGI) LG755512997  
Comments: This Laboratory Grown Diamond was created by Chemical Vapor Deposition (CVD) growth process. Type IIa