



ELECTRONIC COPY

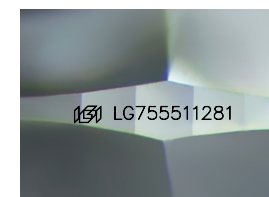
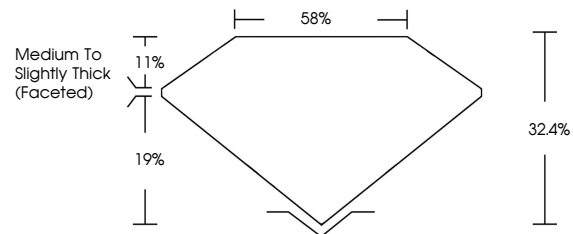
LG755511281
Report verification at igi.org



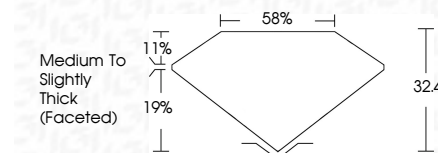
December 12, 2025
IGI Report Number **LG755511281**
Description **LABORATORY GROWN DIAMOND**
Shape and Cutting Style **ROUND ROSE CUT**
Measurements **8.38 - 8.47 X 2.73 MM**
GRADING RESULTS
Carat Weight **1.65 CARAT**
Color Grade **E**
Clarity Grade **VVS 2**

December 12, 2025
IGI Report Number **LG755511281**
Description **LABORATORY GROWN DIAMOND**
Shape and Cutting Style **ROUND ROSE CUT**
Measurements **8.38 - 8.47 X 2.73 MM**
GRADING RESULTS
Carat Weight **1.65 CARAT**
Color Grade **E**
Clarity Grade **VVS 2**

PROPORTIONS



Sample Image Used



ADDITIONAL GRADING INFORMATION

Polish **EXCELLENT**
Symmetry **EXCELLENT**
Fluorescence **NONE**
Inscription(s) **IGI LG755511281**

Comments: This Laboratory Grown Diamond was created by Chemical Vapor Deposition (CVD) growth process.
Type IIa

ADDITIONAL GRADING INFORMATION

Polish **EXCELLENT**
Symmetry **EXCELLENT**
Fluorescence **NONE**
Inscription(s) **IGI LG755511281**
Comments: This Laboratory Grown Diamond was created by Chemical Vapor Deposition (CVD) growth process.
Type IIa

COLOR

D E F G H I J Faint Very Light Light

CLARITY

FL	IF	VVS ¹⁻²	VS ¹⁻²	SI ¹⁻²	I ¹⁻³
Flawless	Internally Flawless	Very Very Slightly Included	Very Slightly Included	Slightly Included	Included



IGI



December 12, 2025
IGI Report No LG755511281
ROUND ROSE CUT
8.38 - 8.47 X 2.73 MM
1.65 CARAT
E
VVS 2
32.4%
35%
Medium to Slightly Thick (Faceted)
EXCELLENT
EXCELLENT
NONE
IGI LG755511281
Comments: This Laboratory Grown Diamond was created by Chemical Vapor Deposition (CVD) growth process.
Type IIa