



**LABORATORY GROWN DIAMOND REPORT**

December 12, 2025  
 IGI Report Number **LG755509914**  
 Description **LABORATORY GROWN DIAMOND**  
 Shape and Cutting Style **OVAL BRILLIANT**  
 Measurements **6.51 X 4.42 X 2.81 MM**

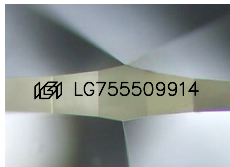
**GRADING RESULTS**

Carat Weight **0.52 CARAT**  
 Color Grade **F**  
 Clarity Grade **VS 2**

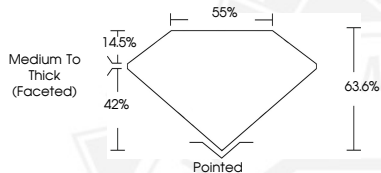
**ADDITIONAL GRADING INFORMATION**

Polish **VERY GOOD**  
 Symmetry **VERY GOOD**  
 Fluorescence **NONE**  
 Inscription(s) **IGI LG755509914**

Comments: This Laboratory Grown Diamond was created by  
 Chemical Vapor Deposition (CVD) growth process.  
 Type IIa



Sample Image Used



December 12, 2025  
 IGI Report Number **LG755509914**  
**OVAL BRILLIANT**  
**LABORATORY GROWN DIAMOND**  
**6.51 X 4.42 X 2.81 MM**  
 Carat Weight **0.52 CARAT**  
 Color Grade **F**  
 Clarity Grade **VS 2**  
 Polish **VERY GOOD**  
 Symmetry **VERY GOOD**  
 Fluorescence **NONE**  
 Inscription(s) **IGI LG755509914**

Comments: This Laboratory Grown Diamond was created by  
 Chemical Vapor Deposition (CVD) growth process. Type IIa



December 12, 2025  
 IGI Report Number **LG755509914**  
**OVAL BRILLIANT**  
**LABORATORY GROWN DIAMOND**  
**6.51 X 4.42 X 2.81 MM**  
 Carat Weight **0.52 CARAT**  
 Color Grade **F**  
 Clarity Grade **VS 2**  
 Polish **VERY GOOD**  
 Symmetry **VERY GOOD**  
 Fluorescence **NONE**  
 Inscription(s) **IGI LG755509914**

Comments: This Laboratory Grown Diamond was created by  
 Chemical Vapor Deposition (CVD) growth process. Type IIa



THIS DOCUMENT WAS PRODUCED WITH THE FOLLOWING SECURITY MEASURES: SPECIAL DOCUMENT PAPER, INK SCREENS, WATERMARK, BACKGROUND DESIGNS, HOLOGRAM AND OTHER SECURITY FEATURES NOT LISTED AND DO EXCEED DOCUMENT SECURITY INDUSTRY GUIDELINES.