



**ELECTRONIC COPY**

LG755506806  
Report verification at [igi.org](http://igi.org)



January 22, 2026

IGI Report Number **LG755506806**

Description **LABORATORY GROWN DIAMOND**

Shape and Cutting Style **ROUND BRILLIANT**

Measurements **7.53 - 7.56 X 4.67 MM**

**GRADING RESULTS**

Carat Weight **1.62 CARAT**

Color Grade **E**

Clarity Grade **VVS 2**

Cut Grade **IDEAL**

January 22, 2026

IGI Report Number **LG755506806**

Description **LABORATORY GROWN DIAMOND**

Shape and Cutting Style **ROUND BRILLIANT**

Measurements **7.53 - 7.56 X 4.67 MM**

**GRADING RESULTS**

Carat Weight **1.62 CARAT**

Color Grade **E**

Clarity Grade **VVS 2**

Cut Grade **IDEAL**

**ADDITIONAL GRADING INFORMATION**

Polish **EXCELLENT**

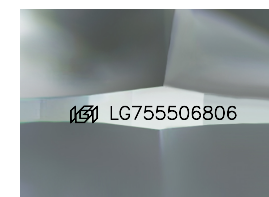
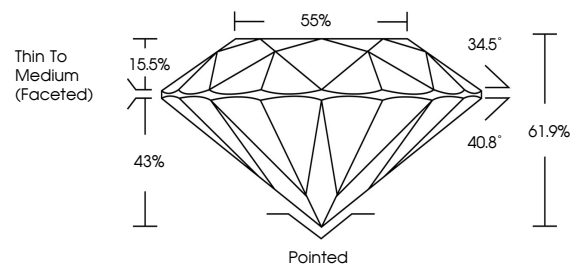
Symmetry **EXCELLENT**

Fluorescence **NONE**

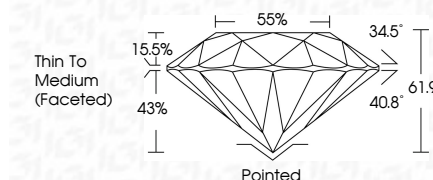
Inscription(s) **IGI LG755506806**

Comments: This Laboratory Grown Diamond was created by Chemical Vapor Deposition (CVD) growth process. Type IIa

**PROPORTIONS**



Sample Image Used



**COLOR**

D E F G H I J Faint Very Light Light

**CLARITY**

FL	IF	VS <sup>1-2</sup>	VS <sup>1-2</sup>	SI <sup>1-2</sup>	I <sup>1-3</sup>
Flawless	Internally Flawless	Very Very Slightly Included	Very Slightly Included	Slightly Included	Included

**ADDITIONAL GRADING INFORMATION**

Polish **EXCELLENT**

Symmetry **EXCELLENT**

Fluorescence **NONE**

Inscription(s) **IGI LG755506806**

Comments: This Laboratory Grown Diamond was created by Chemical Vapor Deposition (CVD) growth process. Type IIa



**IGI**



January 22, 2026  
IGI Report No LG755506806  
ROUND BRILLIANT

7.53 - 7.56 X 4.67 MM  
1.62 CARAT  
E  
VVS 2  
IDEAL  
61.9%  
85%  
Thin To Medium (Faceted)

Culet  
Polish  
Symmetry  
Fluorescence  
Inscriptions(s)

Pointed  
EXCELLENT  
EXCELLENT  
NONE  
IGI LG755506806

Comments: This Laboratory Grown Diamond was created by Chemical Vapor Deposition (CVD) growth process. Type IIa