



ELECTRONIC COPY

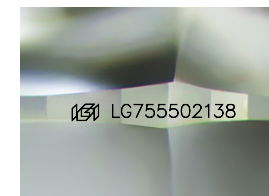
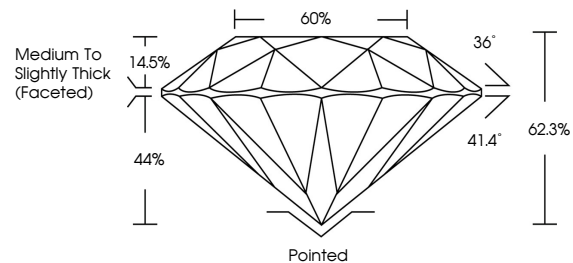
LG755502138 Report verification at igi.org



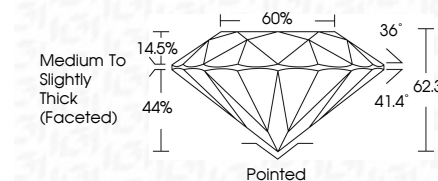
December 13, 2025 IGI Report Number LG755502138 Description LABORATORY GROWN DIAMOND Shape and Cutting Style ROUND BRILLIANT Measurements 6.54 - 6.58 X 4.08 MM GRADING RESULTS Carat Weight 1.08 CARAT Color Grade F Clarity Grade VS 2 Cut Grade EXCELLENT

December 13, 2025 IGI Report Number LG755502138 Description LABORATORY GROWN DIAMOND Shape and Cutting Style ROUND BRILLIANT Measurements 6.54 - 6.58 X 4.08 MM GRADING RESULTS Carat Weight 1.08 CARAT Color Grade F Clarity Grade VS 2 Cut Grade EXCELLENT

PROPORTIONS



Sample Image Used



ADDITIONAL GRADING INFORMATION

Polish VERY GOOD Symmetry VERY GOOD Fluorescence NONE Inscription(s) IGI LG755502138

Comments: As Grown - No indication of post-growth treatment. This Laboratory Grown Diamond was created by High Pressure High Temperature (HPHT) growth process. Type II

COLOR

D E F G H I J Faint Very Light Light

CLARITY

FL IF VS 1-2 VS 1-2 SI 1-2 I 1-3 Flawless Internally Flawless Very Very Slightly Included Very Slightly Included Slightly Included Included

ADDITIONAL GRADING INFORMATION

Polish VERY GOOD Symmetry VERY GOOD Fluorescence NONE Inscription(s) IGI LG755502138 Comments: As Grown - No indication of post-growth treatment. This Laboratory Grown Diamond was created by High Pressure High Temperature (HPHT) growth process. Type II



December 13, 2025 IGI Report No LG755502138 ROUND BRILLIANT 6.54 - 6.58 X 4.08 MM 1.08 CARAT F VS 2 EXCELLENT 62.3% 66% Medium To Slightly Thick (Faceted) Pointed VERY GOOD VERY GOOD VERY GOOD NONE NONE IGI LG755502138 Comments: As Grown - No indication of post-growth treatment. This Laboratory Grown Diamond was created by High Pressure High Temperature (HPHT) growth process. Type II