



ELECTRONIC COPY

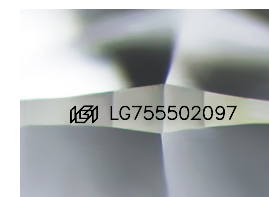
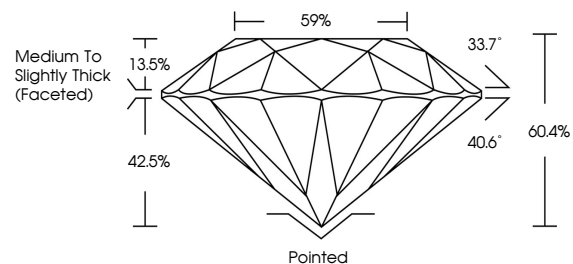
LG755502097
Report verification at igi.org



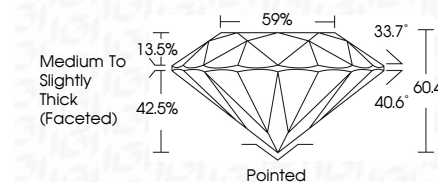
December 12, 2025
IGI Report Number **LG755502097**
Description **LABORATORY GROWN DIAMOND**
Shape and Cutting Style **ROUND BRILLIANT**
Measurements **6.56 - 6.60 X 3.98 MM**
GRADING RESULTS
Carat Weight **1.06 CARAT**
Color Grade **G**
Clarity Grade **VS 1**
Cut Grade **IDEAL**

December 12, 2025
IGI Report Number **LG755502097**
Description **LABORATORY GROWN DIAMOND**
Shape and Cutting Style **ROUND BRILLIANT**
Measurements **6.56 - 6.60 X 3.98 MM**
GRADING RESULTS
Carat Weight **1.06 CARAT**
Color Grade **G**
Clarity Grade **VS 1**
Cut Grade **IDEAL**

PROPORTIONS



Sample Image Used



ADDITIONAL GRADING INFORMATION

Polish **VERY GOOD**
Symmetry **VERY GOOD**
Fluorescence **NONE**
Inscription(s) **IGI LG755502097**

Comments: As Grown - No indication of post-growth treatment.
This Laboratory Grown Diamond was created by High Pressure High Temperature (HPHT) growth process.
Type II

COLOR

D E F G H I J Faint Very Light Light

CLARITY

FL	IF	VS ¹⁻²	VS ¹⁻²	SI ¹⁻²	I ¹⁻³
Flawless	Internally Flawless	Very Very Slightly Included	Very Slightly Included	Slightly Included	Included

ADDITIONAL GRADING INFORMATION

Polish **VERY GOOD**
Symmetry **VERY GOOD**
Fluorescence **NONE**
Inscription(s) **IGI LG755502097**
Comments: As Grown - No indication of post-growth treatment.
This Laboratory Grown Diamond was created by High Pressure High Temperature (HPHT) growth process.
Type II



IGI



December 12, 2025
IGI Report No **LG755502097**
ROUND BRILLIANT
6.56 - 6.60 X 3.98 MM
Carat Weight **1.06 CARAT**
Color Grade **G**
Clarity Grade **VS 1**
Depth **IDEAL**
Table **60.4%**
Girdle **59%**
Medium To Slightly Thick (Faceted)
Culet **Pointed**
Polish **VERY GOOD**
Symmetry **VERY GOOD**
Fluorescence **NONE**
Inscriptions(s) **IGI LG755502097**
Comments: As Grown - No indication of post-growth treatment.
This Laboratory Grown Diamond was created by High Pressure High Temperature (HPHT) growth process.
Type II