



ELECTRONIC COPY

LABORATORY GROWN DIAMOND REPORT

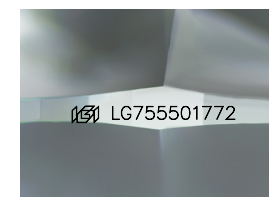
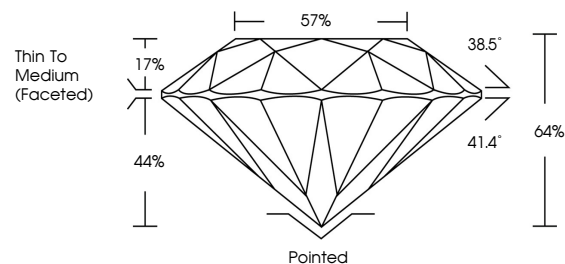
December 11, 2025
IGI Report Number LG755501772
Description LABORATORY GROWN DIAMOND
Shape and Cutting Style ROUND BRILLIANT
Measurements 6.82 - 6.85 X 4.38 MM
GRADING RESULTS
Carat Weight 1.26 CARAT
Color Grade E
Clarity Grade VS 1
Cut Grade VERY GOOD

ADDITIONAL GRADING INFORMATION

Polish VERY GOOD
Symmetry VERY GOOD
Fluorescence NONE
Inscription(s) IGI LG755501772

Comments: As Grown - No indication of post-growth treatment. This Laboratory Grown Diamond was created by High Pressure High Temperature (HPHT) growth process. Type II

PROPORTIONS



Sample Image Used

COLOR

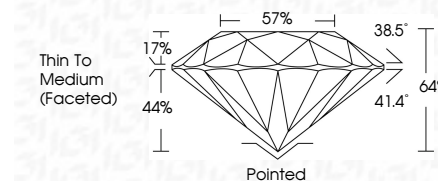
D E F G H I J Faint Very Light Light

CLARITY

Table with columns: FL, IF, VS 1-2, VVS 1-2, SI 1-2, I 1-3 and corresponding clarity descriptions.



December 11, 2025
IGI Report Number LG755501772
Description LABORATORY GROWN DIAMOND
Shape and Cutting Style ROUND BRILLIANT
Measurements 6.82 - 6.85 X 4.38 MM
GRADING RESULTS
Carat Weight 1.26 CARAT
Color Grade E
Clarity Grade VS 1
Cut Grade VERY GOOD



ADDITIONAL GRADING INFORMATION

Polish VERY GOOD
Symmetry VERY GOOD
Fluorescence NONE
Inscription(s) IGI LG755501772
Comments: As Grown - No indication of post-growth treatment. This Laboratory Grown Diamond was created by High Pressure High Temperature (HPHT) growth process. Type II



December 11, 2025
IGI Report No LG755501772
ROUND BRILLIANT
6.82 - 6.85 X 4.38 MM
1.26 CARAT
E
VS 1
VERY GOOD
64%
57%
Thin To Medium (Faceted)
Pointed
VERY GOOD
VERY GOOD
NONE
IGI LG755501772
Comments: As Grown - No indication of post-growth treatment. This Laboratory Grown Diamond was created by High Pressure High Temperature (HPHT) growth process. Type II