



**ELECTRONIC COPY**

LG755501749  
Report verification at [igi.org](http://igi.org)



December 11, 2025

IGI Report Number **LG755501749**

Description **LABORATORY GROWN DIAMOND**

Shape and Cutting Style **ROUND BRILLIANT**

Measurements **6.90 - 6.93 X 4.21 MM**

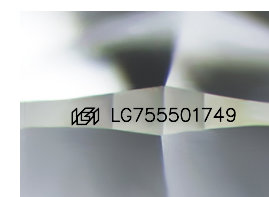
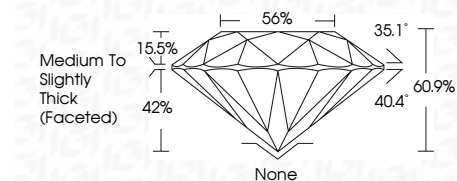
**GRADING RESULTS**

Carat Weight **1.24 CARAT**

Color Grade **E**

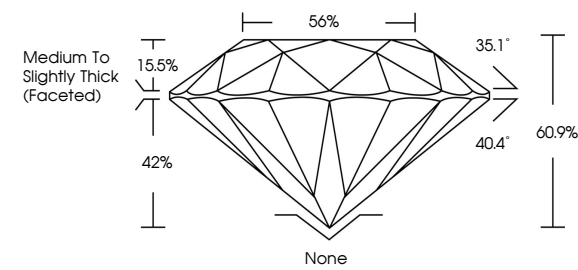
Clarity Grade **VVS 2**

Cut Grade **IDEAL**



Sample Image Used

**PROPORTIONS**



**COLOR**

D	E	F	G	H	I	J	Faint	Very Light	Light
---	---	---	---	---	---	---	-------	------------	-------

**CLARITY**

FL	IF	VVS <sup>1-2</sup>	VS <sup>1-2</sup>	SI <sup>1-2</sup>	I <sup>1-3</sup>
Flawless	Internally Flawless	Very Very Slightly Included	Very Slightly Included	Slightly Included	Included

**ADDITIONAL GRADING INFORMATION**

Polish **VERY GOOD**

Symmetry **VERY GOOD**

Fluorescence **NONE**

Inscription(s) **IGI LG755501749**

Comments: As Grown - No indication of post-growth treatment.

This Laboratory Grown Diamond was created by High Pressure High Temperature (HPHT) growth process. Type II

December 11, 2025

IGI Report Number **LG755501749**

Description **LABORATORY GROWN DIAMOND**

Shape and Cutting Style **ROUND BRILLIANT**

Measurements **6.90 - 6.93 X 4.21 MM**

**GRADING RESULTS**

Carat Weight **1.24 CARAT**

Color Grade **E**

Clarity Grade **VVS 2**

Cut Grade **IDEAL**

**ADDITIONAL GRADING INFORMATION**

Polish **VERY GOOD**

Symmetry **VERY GOOD**

Fluorescence **NONE**

Inscription(s) **IGI LG755501749**

Comments: As Grown - No indication of post-growth treatment.

This Laboratory Grown Diamond was created by High Pressure High Temperature (HPHT) growth process. Type II



December 11, 2025  
IGI Report No LG755501749  
ROUND BRILLIANT  
6.90 - 6.93 X 4.21 MM  
1.24 CARAT  
E  
VVS 2  
IDEAL  
60.9%  
56%  
Medium To Slightly Thick (Faceted)  
None  
VERY GOOD  
VERY GOOD  
NONE  
IGI LG755501749

Comments: As Grown - No indication of post-growth treatment. This Laboratory Grown Diamond was created by High Pressure High Temperature (HPHT) growth process. Type II